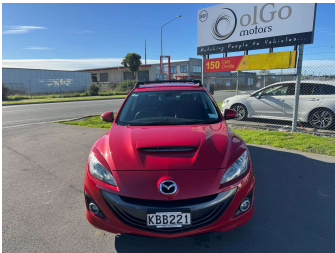


2011 Mazda Axela 23 MPS Mazdaspeed



Purchase Price

Includes GST
Excludes on-road costs of \$150

\$16,830

Finance may be available on this vehicle. Ask one of our friendly staff for more information.

Gain peace of mind with Mechanical Breakdown Insurance. **Ask us how.**

Top features

- » ABS Braking
- » Air Conditioning
- » Alloy Wheels (Factory)
- » Body Kit (Factory)
- » CD Player
- » Central Locking
- » Chain Driven (no cam b...)
- » Comes with new WOF
- » Electric Windows
- » Front Wheel Drive
- » New Shape
- » Power Front Seat(s)
- » Radio
- » Remote Locking
- » Reversing Camera
- » Roof Rack
- » Smart Key

Body Style

5 door, Hatchback

Odometer

119,600 km

Engine

2300 cc, Petrol

Fuel Type

Petrol

Transmission

6-Speed Manual, Front Wheel

Wheels

-

VIN

7AT0C13JX16101690

Interior

Black, Half Leather

Safety



Based on 2024 UCSR rating for 09-13 models

Reg No.

KBB221

Ext Colour

Red

History

Ex-Overseas, 4 owners

Seats

5 seats

CO2 Emissions

★ ★ ☆ ☆ ☆ ☆

257 grams/km

Energy Economy

★ ☆ ☆ ☆ ☆ ☆

**Annual fuel cost of \$4,190
10.7L per 100km**

Cost per year is an estimate based on petrol price of \$2.80 per litre and an average distance of 14000 km. Emissions and Energy Economy figures standardised to 3P WLTP.

Stock ID: 25379



OlGo Motors | Phone 03 281 8581 | Email sales@olgo.co.nz
861-874 Jones Road, Rolleston 7614, New Zealand
www.olgomotors.co.nz



★★★★★
4.52 | 4239 reviews