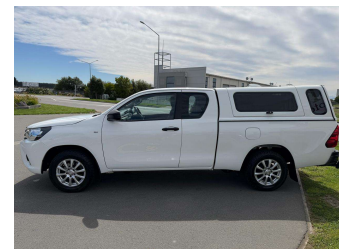


# 2019 Toyota Hilux S TD EC 2.8D/5MT/UT



**Purchase Price** **\$27,430**

Includes GST  
Excludes on-road costs of \$150

Finance may be available on this vehicle. Ask one of our friendly staff for more information.

Gain peace of mind with Mechanical Breakdown Insurance. **Ask us how.**

- Top features**
- » ABS Braking
  - » Air Conditioning
  - » CD Player
  - » Central Locking
  - » Comes with new WOF
  - » Cruise Control
  - » Electric Windows
  - » ESC
  - » Radio
  - » Rear Wheel Drive
  - » Remote Locking
  - » Reversing Camera
  - » Tow Bar

**Body Style**  
4 door, Ute

**Odometer**  
134,000 km

**Engine**  
2800 cc, Internal Combustion

**Fuel Type**  
Diesel


**Transmission**  
Manual, Rear Wheel

**Wheels**  
-

**VIN**  
MR0JA3CC300080758

**Interior**  
Grey, Cloth

**Safety**



Based on 2025 UCSR rating for 15-19 models

**Reg No.**  
MNK240

**Ext Colour**  
White

**History**  
NZ New, 1 owner

**Seats**  
4 seats

**CO2 Emissions**  
★★★★☆☆  
223 grams/km

**Energy Economy**  
★★★★☆☆  
Annual fuel cost of \$3,420  
8.4L per 100km

Cost per year is an estimate based on diesel price of \$2.00 per litre and an average distance of 14000 km. Includes Road User Charges (RUC). Emissions and Energy Economy figures standardised to 3P WLTP.

**Stock ID: 25952**



olGo Motors | Phone 03 281 8581 | Email sales@olgo.co.nz  
861-874 Jones Road, Rolleston 7614, New Zealand  
www.olgomotors.co.nz

