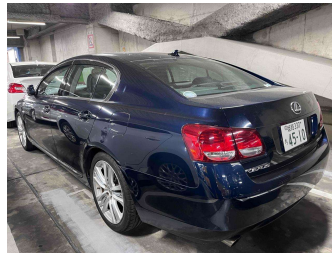


2006 Lexus GS 450h Ver. L



Purchase Price **\$12,930**

Includes GST
Excludes on-road costs of \$475

Finance may be available on this vehicle. Ask one of our friendly staff for more information.

Gain peace of mind with Mechanical Breakdown Insurance. **Ask us how.**

- Top features**
- » ABS Braking
 - » Air Conditioning
 - » Alloy Wheels (Factory)
 - » Body Kit (Factory)
 - » CD Player
 - » Central Locking
 - » Chain Driven (no cam b...
 - » Comes with new WOF
 - » Cruise Control
 - » Electric Windows
 - » ESC
 - » Power Front Seat(s)
 - » Radio
 - » Rear Wheel Drive
 - » Remote Locking
 - » Reversing Camera
 - » Smart Key

| | | | |
|---------------------|-------------------------|------------------------|--------------------|
| Body Style | 4 door, Sedan | Reg No. | - |
| Odometer | 77,500 km | Ext Colour | Navy Blue |
| Engine | 3500 cc, Hybrid | History | Ex-Overseas |
| Fuel Type | Electricity | Seats | 5 seats |
| Transmission | Auto, Rear Wheel | CO2 Emissions | - |
| Wheels | - | Energy Economy | - |
| VIN | - | | |
| Interior | Black, Leather | | |
| Safety | - | | |
| | | Stock ID: 26093 | |



olGo Motors | Phone 03 281 8581 | Email sales@olgo.co.nz
861-874 Jones Road, Rolleston 7614, New Zealand
www.olgomotors.co.nz

★★★★★
4.52 | 4423 reviews