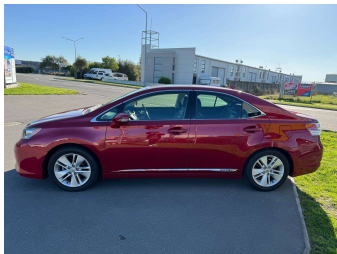


2011 Lexus HS250h



Purchase Price

Includes GST
Excludes on-road costs of \$150

\$12,230

Finance may be available on this vehicle. Ask one of our friendly staff for more information.

Gain peace of mind with Mechanical Breakdown Insurance. **Ask us how.**

Top features

- » ABS Braking
- » Air Conditioning
- » Alloy Wheels (Factory)
- » Body Kit (Factory)
- » CD Player
- » Central Locking
- » Chain Driven (no cam b...)
- » Comes with new WOF
- » Cruise Control
- » Electric Windows
- » ESC
- » Front Wheel Drive
- » Heated Seat(s)
- » Power Front Seat(s)
- » Radio
- » Remote Locking
- » Reversing Camera
- » Smart Key

Body Style

4 door, Sedan

Odometer

96,500 km

Engine

2400 cc, Hybrid

Fuel Type

Hybrid

Transmission

Auto, Front Wheel

Wheels

-

VIN

7AT0B01YX21049130

Interior

Black, Leather

Safety



Based on 2024 VSRR rating

Reg No.

QUG488

Ext Colour

Wine Red

History

Ex-Overseas, 5 owners

Seats

5 seats

CO2 Emissions

★★★★☆

137 grams/km

Energy Economy

★★★★☆☆

Annual fuel cost of \$2,310

5.9L per 100km

Cost per year is an estimate based on petrol price of \$2.80 per litre and an average distance of 14000 km. Emissions and Energy Economy figures standardised to 3P WLTP.

Stock ID: 25318



OlGo Motors | Phone 03 281 8581 | Email sales@olgo.co.nz
861-874 Jones Road, Rolleston 7614, New Zealand
www.olgomotors.co.nz



★★★★★
4.52 | 4235 reviews