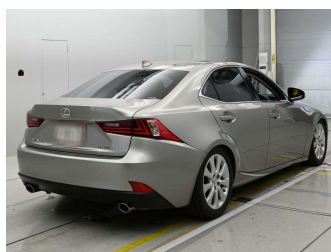


2013 Lexus IS 250



Purchase Price

\$16,430

Includes GST
Excludes on-road costs of \$475

Finance may be available on this vehicle. Ask one of our friendly staff for more information.

Gain peace of mind with Mechanical Breakdown Insurance. **Ask us how.**

Top features

- » ABS Braking
- » Air Conditioning
- » Alloy Wheels (Factory)
- » Body Kit (Factory)
- » CD Player
- » Central Locking
- » Chain Driven (no cam b...
- » Comes with new WOF
- » Cruise Control
- » Electric Windows
- » ESC
- » New Shape
- » Radio
- » Rear Wheel Drive
- » Remote Locking
- » Smart Key

Body Style

4 door, Sedan

Odometer

154,300 km

Engine

2500 cc, Internal Combustion

Fuel Type

Petrol

Transmission

6-Speed Auto, Rear Wheel

Wheels

-

VIN

-

Interior

Black, Half Leather

Safety

-

Reg No.

-

Ext Colour

Grey

History

Ex-Overseas

Seats

5 seats

CO2 Emissions

-

Energy Economy

-

Stock ID: 26094



olGo Motors | Phone 03 281 8581 | Email sales@olgo.co.nz
861-874 Jones Road, Rolleston 7614, New Zealand
www.olgomotors.co.nz

