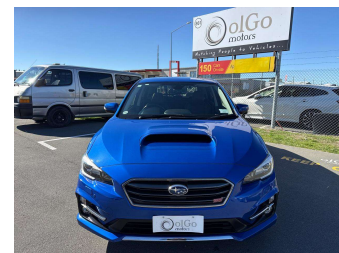


2016 Subaru Levorg 2.0 STi 4WD EyeSight



Purchase Price **\$21,930**

Includes GST
Excludes on-road costs of \$475

Finance may be available on this vehicle. Ask one of our friendly staff for more information.

Gain peace of mind with Mechanical Breakdown Insurance. **Ask us how.**

- Top features**
- » 4WD
 - » ABS Braking
 - » Air Conditioning
 - » Alloy Wheels (Factory)
 - » Body Kit (Factory)
 - » CD Player
 - » Central Locking
 - » Chain Driven (no cam b...)
 - » Comes with new WOF
 - » Cruise Control
 - » Electric Mirrors
 - » Electric Windows
 - » ESC
 - » Facelift Model
 - » Heated Seat(s)
 - » Power Front Seat(s)
 - » Radio
 - » Remote Locking

Body Style
5 door, Station Wagon

Odometer
107,300 km

Engine
2000 cc, Internal Combustion

Fuel Type
Petrol

Transmission
Auto, 4WD/4x4

Wheels
-

VIN
7AT0GF22X26020600

Interior
Black & Red, Leather

Safety



Based on 2025 VSRR rating

Reg No.
-

Ext Colour
Blue

History
Ex-Overseas

Seats
5 seats

CO2 Emissions
★★★★☆
195 grams/km

Energy Economy
★★☆☆☆

Annual fuel cost of \$3,290
8.4L per 100km

Cost per year is an estimate based on petrol price of \$2.80 per litre and an average distance of 14000 km. Emissions and Energy Economy figures standardised to 3P WLTP.

Stock ID: 25958



olGo Motors | Phone 03 281 8581 | Email sales@olgo.co.nz
861-874 Jones Road, Rolleston 7614, New Zealand
www.olgomotors.co.nz

